

# 600 SERIES

TELESCOPIC BOOM LIFTS



## Performance

Platform Height		
600S	59 ft 8 in.	18.18 m
660SJ	65 ft 8 in.	20.02 m
Horizontal Outreach		
600S	50 ft 2 in.	15.29 m
660SJ	57 ft 1 in.	17.40 m
Swing		
	360° Continuous	
Platform Capacity		
600S Restricted/Unrestricted	1,000 lb/600 lb	454 kg/272 kg
660SJ Restricted/Unrestricted	750 lb/550 lb	340 kg/249 kg
Platform Rotator		
600S	160° Hydraulic	
660SJ	180° Hydraulic	
Weight <sup>1</sup>		
600S	21,461 lb	9,735 kg
660SJ	25,341 lb	11,494 kg
Max. Ground Bearing Pressure		
600S	77.7 psi	5.46 kg/cm <sup>2</sup>
660SJ	85 psi	5.97 kg/cm <sup>2</sup>
Drive Speed 4WD		
	3.8 mph	
Gradeability 4WD		
	45%	
Axle Oscillation		
	8 in.	
Turning Radius, Inside/Outside		
2WS	9 ft 7 in./19 ft 4 in.	2.92 m/5.89 m
4WS	5 ft 3 in./12 ft 8 in.	1.61 m/3.87 m

1. Certain options or country standards increase weight

## Standard Specifications

### Power Source

Dual Fuel Engine		
Ford MSG425-DF	84 hp	62 kW
Diesel Engine		
Deutz D2.9L4 Tier 4 Final	48.8 hp	36.4 kW
Fuel Tank Capacity	31 gal	117 L

### Hydraulic System

Capacity	34 gal	129 L
Auxiliary Power	12V DC	

### Tires

Standard	355/55D625 Pneumatic	
Optional	Foam-Filled	



## Standard Features

- Oscillating Axle
- Hydraulic Platform Rotator
- 110V AC Receptacle in the Platform
- 5 Degree Tilt Alarm/Indicator Light
- Swing-Out Engine Tray
- 12V DC Auxiliary Power
- Hourmeter
- SkyGuard®
- Control ADE® System
- All Motion Alarm
- Proportional Controls
- Gull-Wing Hoods
- Platform Console Machine Status
- Light Panel\*
- Engine Distress Warning/Shutdown—
- Selectable via JLG Analyzer
- Lifting/Tie Down Lugs

\*Provides indicator lights at platform control console for system distress, fuel level, low fuel, 5 degree tilt light and foot switch status.

## Accessories & Options

- 36 x 72 in. (0.91 x 1.83 m) Platform
- Fall Arrest Platform
- Inward Swinging Gate
- Mesh to Top Rail Bolt-on Aluminum 6 ft
- Mesh to Top Rail Bolt-on Aluminum 8 ft
- Soft Touch System
- Operators Tool Tray
- Tow Package
- 43.5 lb (19.7 kg) Propane Tank
- Cold Weather Start Kit (Ford)
- Cold Weather Start Kit (Deutz)
- Hostile Environment Kit
- Light Package
- Platform Worklights
- Flashing Amber Beacon
- Arctic Package
- Accessory Packages:
  - SkyWelder®
  - SkyGlazier®
  - Nite Bright®
  - SkyCutter®
  - Pipe Rack
  - SkyPower®

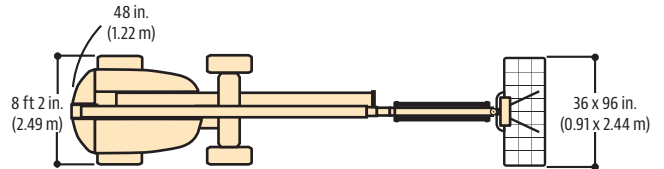
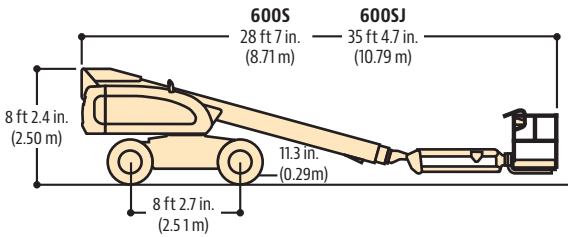
# 600 SERIES

TELESCOPIC BOOM LIFTS



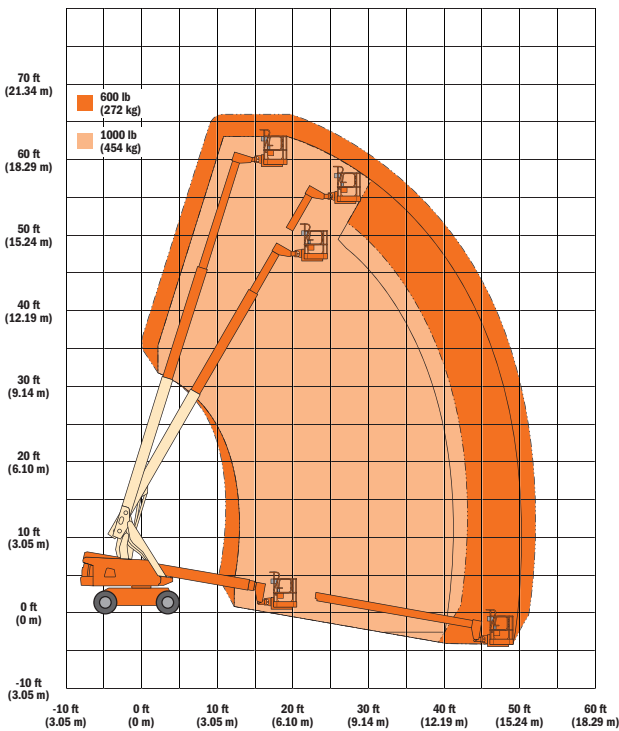
## Dimensions

All dimensions are approximate.

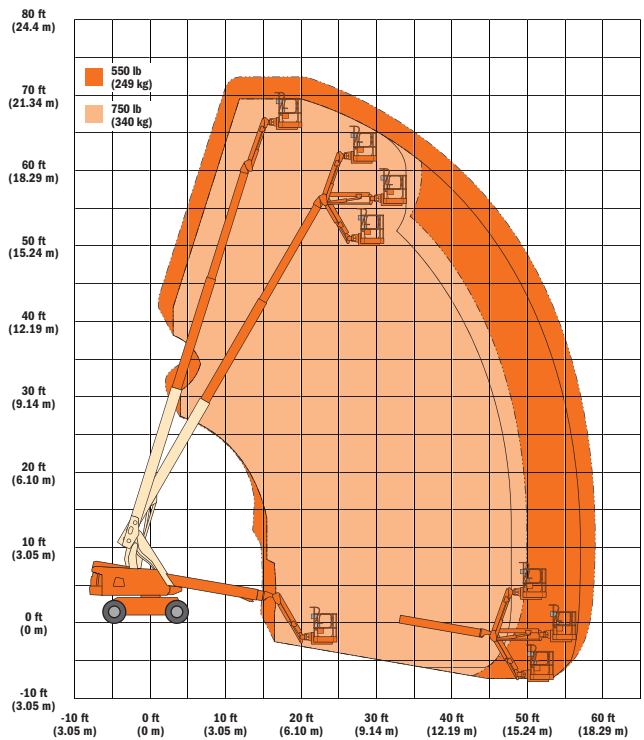


## Reach Dimensions

### 600S



### 660SJ



## The JLG "1 & 5" Warranty

We provide coverage for one (1) full year and cover all specified major structural components for five (5) years. Due to continuous product improvements, we reserve the right to make specification and/or equipment changes without prior notification. This machine meets or exceeds applicable ANSI and CSA requirements based on machine configuration as originally manufactured for intended applications. Please reference the serial number plate on the machine for additional information.

Part No.: 3131028  
R051816  
Printed in USA

**JLG Industries, Inc.**  
1 JLG Drive  
McConnellsburg, PA 17233-9533  
Telephone 717-485-5161  
Toll-free in US 877-JLG-LIFT  
Fax 717-485-6417  
[www.jlg.com](http://www.jlg.com)

An Oshkosh Corporation Company