

# Self-Propelled Telescopic Booms

S<sup>®</sup>-40 XC<sup>™</sup> & S-45 XC, S-40 TraX<sup>™</sup> & S-45 TraX

## Specifications

Models	S-40 XC / S-40 TraX		S-45 XC / S-45 TraX	
Measurements	Metric	US	Metric	US
Working height maximum*	14.04 m	45 ft 6 in	15.56 m	50 ft 6 in
Platform height maximum	12.04 m	39 ft 6 in	13.56 m	44 ft 6 in
Horizontal reach maximum	9.47 m	31 ft 1 in	11.02 m	36 ft 2 in
Below ground reach	0.30 m	1 ft	1.27 m	4 ft 2 in
<b>A</b> Platform length - 8 ft model	0.91 m	3 ft	0.91 m	3 ft
Platform length - 6 ft model	0.76 m	2 ft 6 in	0.76 m	2 ft 6 in
<b>B</b> Platform width - 8 ft model	2.44 m	8 ft	2.44 m	8 ft
Platform width - 6 ft model	1.83 m	6 ft	1.83 m	6 ft
<b>C</b> Height - stowed standard tyres	2.51 m	8 ft 3 in	2.51 m	8 ft 3 in
- stowed with Trax	2.56 m	8 ft 5 in	2.56 m	8 ft 5 in
<b>D</b> Length - stowed	8.03 m	26 ft 4 in	9.47 m	31 ft 1 in
Length - transport	7.80 m	25 ft 7 in	7.37 m	24 ft 2 in
<b>E</b> Width - standard tyres	2.49 m	8 ft 2 in	2.49 m	8 ft 2 in
- Trax option	2.46 m	8 ft 1 in	2.46 m	8 ft 1 in
<b>F</b> Wheelbase	2.46 m	8 ft 1 in	2.46 m	8 ft 1 in
<b>G</b> Ground clearance - center	0.32 m	1 ft 0.5 in	0.32 m	1 ft 0.5 in
- centre Trax	0.30 m	1 ft	0.30 m	1 ft

## Productivity

Lift capacity, restricted	454 kg	1,000 lbs	454 kg	1,000 lbs
Lift capacity, unrestricted	300 kg	660 lbs	300 kg	660 lbs
Platform rotation	160° (70°/90°)		160° (80°/80°)	
Vertical jib rotation	360° continuous		133° (+79°/-54°)	
Turntable rotation	360° continuous		360° continuous	
Turntable tailswing	97 cm	3 ft 2 in	97 cm	3 ft 2 in
Drive speed - 4WD stowed (on tyres)	6.40 km/h	4 mph	6.40 km/h	4 mph
Drive speed - 4WD stowed (with Trax)	4.00 km/h	2.5 mph	4.00 km/h	2.5 mph
Drive speed - raised or extended	0.3 m/s	1 ft/s	0.3 m/s	1 ft/s
Gradeability** stowed - 4WD	45%	45%	45%	45%
Turning radius - inside	2.08 m	6 ft 10 in	2.08 m	6 ft 10 in
- inside with Trax	2.03 m	6 ft 8 in	2.03 m	6 ft 8 in
Turning radius - outside	5.23 m	17 ft 2 in	5.23 m	17 ft 2 in
- outside with Trax	5.18 m	17 ft	5.18 m	17 ft
Controls	12 V DC proportional		12 V DC proportional	
Tyres - RT foam filled	315/55D20-12 ply		315/55D20-12 ply	
Trax - track system	Vermeer Track system		Vermeer Track system	
Ground Pressure (with tyres)	634 kPa	92 psi	634 kPa	92 psi
Ground Pressure (with Trax)	138 kPa	20 psi	152 kPa	22 psi

## Power

Power source	Deutz D2011 L03i diesel, 3 cylinder 49hp (37kW) Stage IIIA Deutz TD2.2 L3 turbo diesel, 3 cylinder 49hp (37kW) Stage V			
Auxiliary power unit	12 V DC	12 V DC	12 V DC	12 V DC
Hydraulic tank capacity	144 L	38 gal	144 L	38 gal
Fuel tank capacity (Diesel)	132 L	35 gal	76 L	20 gal

## Sound & Vibration Levels

Sound pressure level (ground workstation)	89 dBA	89 dBA	89 dBA	89 dBA
Sound pressure level (platform workstation)	77 dBA	77 dBA	77 dBA	77 dBA
Vibration	<2.5 m/s <sup>2</sup>	<8 ft 2 in/s <sup>2</sup>	<2.5 m/s <sup>2</sup>	<8 ft 2 in/s <sup>2</sup>

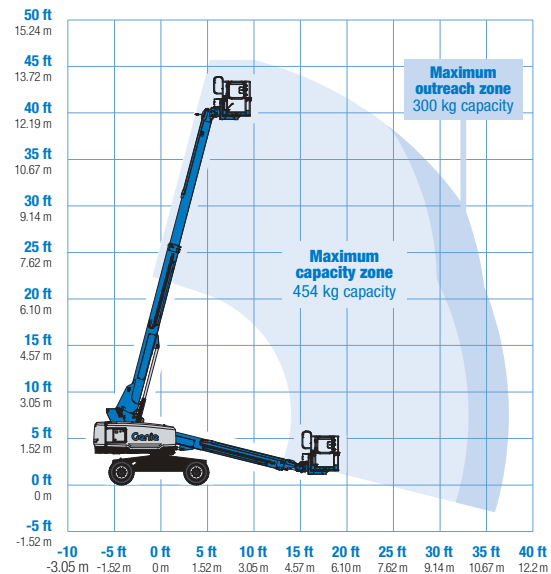
## Weight\*\*\*

CE Foam Filled tyres	6,407 kg	14,124 lbs	7,394 kg	16,300 lbs
Track system	6,969 kg	15,364 lbs	7,956 kg	17,540 lbs

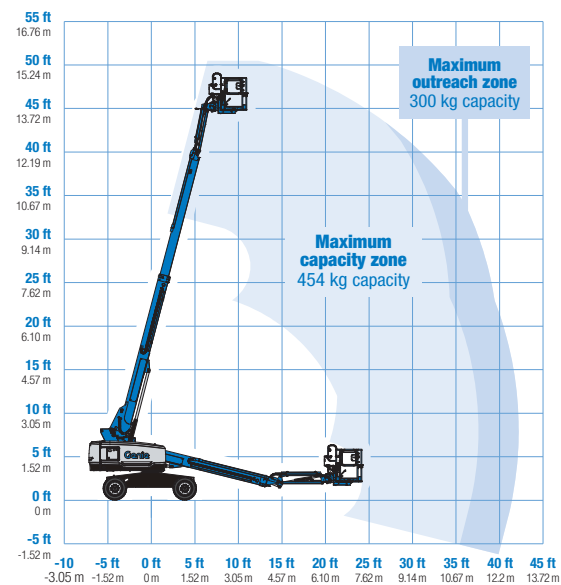
## Standards Compliance

EU Directives: 2006/42/EC - Machinery (harmonized standard EN280:2013+A1:2015); 2004/108/EC (EMC); 2000/14/EC (Outdoor Noise)

## Range of Motion S-40 XC / S-40 TraX



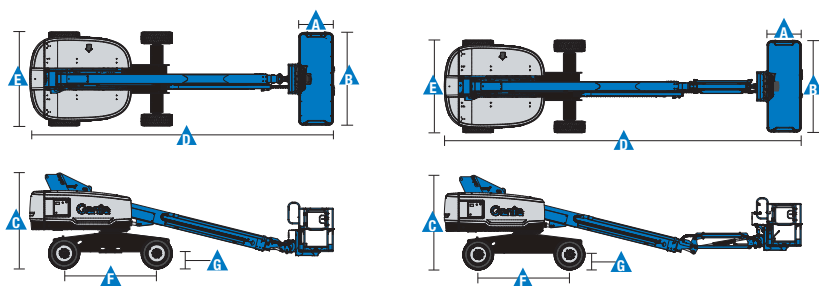
## Range of Motion S-45 XC / S-45 TraX



\* The metric equivalent of working height adds 2 m to platform height. U.S. adds 6 ft to platform height.

\*\* Gradeability applies to driving on slopes. See operator's manual for details regarding slope ratings.

\*\*\* Weight will vary depending on options and/or country standards.



### Features

Standard Features	Easily Configured To Meet Your Needs	Options & Accessories
<b>Measurements</b> <b>S-40 XC, S-40 TraX</b> <ul style="list-style-type: none"> <li>14.04 m (45 ft 6 in) working height</li> <li>9.70 m (31 ft 1 in) horizontal reach</li> <li>300 kg (660 lbs) unrestricted and 454 kg (1,000 lbs) restricted lift capacity</li> </ul> <b>S-45 XC, S-45 TraX</b> <ul style="list-style-type: none"> <li>15.56 m (50 ft 6 in) working height</li> <li>11.02 m (36 ft 2 in) horizontal reach</li> <li>300 kg (660 lbs) unrestricted and 454 kg (1,000 lbs) restricted lift capacity</li> </ul>	<b>Platform Options</b> <ul style="list-style-type: none"> <li>Steel 1.83 m (6 ft) dual-entry platform with side swing gate</li> <li>2.44 m (8 ft) tri-entry platform with side swing gate (standard)</li> </ul> <b>Jib Options</b> <ul style="list-style-type: none"> <li>Non-jib</li> <li>1.52 m (5 ft) articulating jib boom</li> </ul> <b>Engine Options</b> <ul style="list-style-type: none"> <li>Deutz D2011 L03i diesel, 3 cylinder 49hp (37kW) Stage IIIA</li> <li>Deutz TD2.2 L3 turbo diesel, 3 cylinder 49hp (37kW) Stage V</li> </ul> <b>Drive</b> <ul style="list-style-type: none"> <li>4 x 4</li> </ul> <b>Axle</b> <ul style="list-style-type: none"> <li>Active oscillation</li> </ul> <b>Tyre Options</b> <ul style="list-style-type: none"> <li>Rough terrain foam-filled (standard on Tyres)</li> <li>Rough terrain non-marking foam-filled (optional on Tyres)</li> <li>Vermeer Track system (standard on TraX)</li> </ul>	<b>Productivity Options</b> <ul style="list-style-type: none"> <li>Lift Guard<sup>™</sup> Half mesh platform panels<sup>(1)</sup></li> <li>Platform auxiliary top rail</li> <li>Airline to platform<sup>(1)</sup></li> <li>Power to platform: plug, socket, with optional Residual-current Circuit Breaker with Overcurrent protection<sup>(2)</sup></li> <li>Lights package (2 on chassis, 2 on platform)<sup>(1)</sup></li> <li>Biodegradable hydraulic oil<sup>(1)</sup></li> <li>Hostile environment kit<sup>(1)</sup>: cylinder bellows, boom wiper seals, platform and ground control box cover</li> <li>Chassis tilt lift function cut-out kit</li> <li>Panel cradle package<sup>(1)</sup></li> <li>Lockable platform &amp; ground control box covers</li> <li>Techpro Link<sup>™</sup> diagnosis and troubleshooting system</li> </ul> <b>Power Options</b> <ul style="list-style-type: none"> <li>Lift Power<sup>™</sup> 3kW AC generator, 110V/50Hz or 220V/50Hz</li> <li>EMEAR Cold Start kit: Inc. Engine heater &amp; battery charger</li> <li>Diesel catalytic scrubber muffler<sup>(1)</sup></li> <li>Positive air shutdown system</li> </ul>

### Power

- 12 V DC auxiliary power
- Anti-restart engine protection
- Auto engine fault shutdown
- Intake air heater
- Engine gauge package



<sup>(1)</sup> Factory-fit option only

<sup>(2)</sup> Not available if a generator is selected