

Specifications

Models	Z-45/25J DC	
Measurements	US	Metric
Working height maximum*	51 ft 9 in	15.94 m
Platform height maximum	45 ft 9 in	13.94 m
Horizontal reach maximum	25 ft 1 in	7.65 m
Up and over clearance maximum	23 ft 9 in	7.24 m
A Platform length	2 ft 6 in	0.76 m
B Platform width	6 ft	1.83 m
C Height - stowed	6 ft 7 in	2.00 m
D Length - stowed	22 ft 5 in	6.83 m
E Width	5 ft 10.3 in	1.79 m
A Wheelbase	6 ft 8 in	2.03 m
A Ground clearance - center	9.5 in	0.24 m

Productivity

Lift capacity	500 lb	227 kg
Platform rotation	160°	
Vertical jib rotation	135°	
Turntable rotation	355° non-continuous	
Turntable tailswing	zero	
Drive speed - stowed	3.0 mph	4.8 km/h
Drive speed - raised**	0.61 mph	1.0 km/h
Gradeability - stowed***	30%	
Tilt sensor activation	front to back: 4.0° and side to side: 4.5°	
Turning radius - inside	6 ft	1.8 m
Turning radius - outside	14 ft	4.27 m
Controls	24V DC proportional	
Tires	9 x 14.5 in	

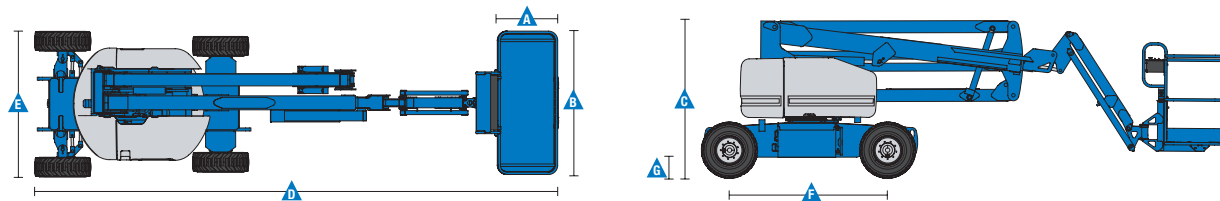
Power

Power source - DC	48V DC (eight 6 V batteries, 350 Ah capacity)	
Power source - Bi-Energy	48V DC (eight 6 V batteries, 350 Ah capacity) with 13.3hp (9.9kW) Kubota T4f Z482 diesel driven alternator	
Auxiliary power unit	24V DC	
Hydraulic tank capacity	8 gal	30.3 L
Fuel tank capacity- Bi-Energy	9 gal	34.1 L

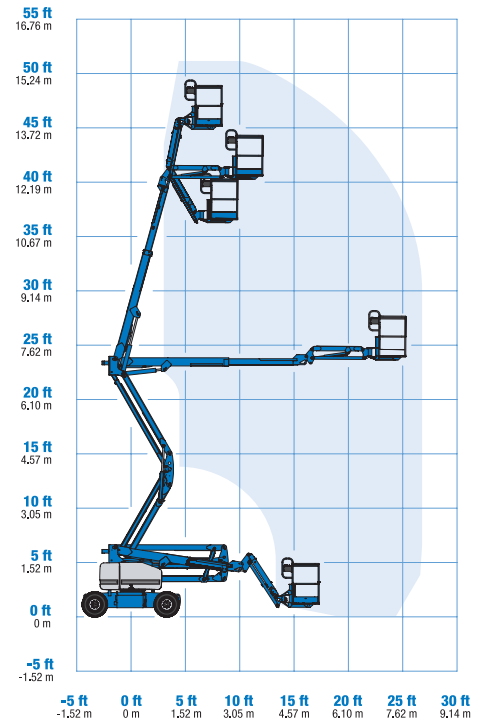
Weight****

DC	16,315 lb	7,400 kg
----	-----------	----------

Standards Compliance ANSI A92.20, CSA B354.6, EN 280, AS 1418.10



Range Of Motion Z-45/25J



* The metric equivalent of working height adds 2 m to platform height. U.S. adds 6 ft to platform height.

** In lift mode (platform raised), the machine is designed to operate on firm, level surfaces only.

*** Gradeability applies to driving on slopes. See operator's manual for details regarding slope ratings.

**** Weight will vary depending on options and/or country standards.

Features

Standard Features

Measurements

Z-45/25J

- 51 ft 9 in (15.94 m) working height
- 25 ft 1 in (7.65 m) horizontal reach
- 22 ft 1 in (6.73 m) up and over clearance
- Up to 500 lb (227 kg) lift capacity

Productivity

- Articulating 5 ft (1.52 m) jib boom
- Self-leveling platform
- Hydraulic platform rotation
- Proportional joystick controls
- Thumb rocker steer
- Drive enable
- AC power to platform
- Horn
- Hour meter
- Tilt alarm
- Zero tailswing
- 355° non-continuous turntable rotation
- Entry toeboard
- Lift Guard™ Contact Alarm
- Dual parallelogram for vertical wall tracking
- Lift Connect™ Telematics
- Lift Tools™ Work Tray
- Platform load sense

Power

- 48V deep cycle battery pack
- 24V DC auxiliary power
- Universal 30A battery smart charger

Easily Configured To Meet Your Needs

Platform Options

- Steel 6 ft (1.83 m) dual entry with side swing gate (standard)
- Steel 3 ft 10 in (1.17m) with sliding mid-rail

Power

- 48V DC (eight 6V 350 Ah batteries)

Drive

- 2WD

Tire Options

- Industrial foam-filled (standard)
- Industrial non-marking foam-filled

Options & Accessories

Productivity

- Lift Guard Platform Mesh - Half
- Platform top auxiliary rail
- Air line to platform
- Specialty hydraulic oil (fire resistant or biodegradable)
- Aircraft protection package*
- Pipe cradle (pair)**
- Alarm package
- Light package
- Lockable platform control box cover
- Tow package
- Operator Protective Structure**
- Fall Arrest Bar
- Florescent tube caddy**
- Lift Tools Expo Installer**

Power

- AGM batteries
- EE UL583 Fire Protection rating
- Battery charge indicator-BCI
- Low voltage interrupt with BCI
- 800 watt inverter



* Reduces platform capacity to 440 lb
** Available through aftermarket parts only

Genie United States

6464 185th Ave. NE
Redmond, WA 98052
Telephone +1 (425) 881-1800
Toll Free in USA/Canada +1 (800)-536-1800
Fax +1 (425) 883-3475

Distributed By: